

Injury attendances to North Manchester General Hospital Emergency Department

April 2011 to March 2012

This report summarises recorded injury attendances to North Manchester General Hospital Emergency Department (ED) between April 2011 and March 2012.

Between April 2011 and March 2012 there were 32,888 injury attendances to North Manchester General Hospital ED. Males accounted for over half (54%) of all attendances. The month with the highest attendances was March (n=3,316) with December (n=2,362) having the lowest attendances (**Figure 1**). The majority (61%) of attendances were recorded as other injury. Of the specified injury groups falls (21%) accounted for the highest proportion followed by road traffic collision (RTC) (7%) (**Table 1**).

For all injuries the highest proportion of attendances were for persons aged 5 to 19 (25%) and 20 to 34 years (23%) (**Figure 2**). Over a third (36%) of fall attendees were aged 65 or over. Two-fifths (40%) of deliberate self-harm (DSH) attendees were aged 20 to 34 years (**Figure 3**).

Table 2 shows the location of the incident of injury attendances. Over a half (52%) of injuries occurred in the home. Almost one in seven (14%) injuries occurred in a public place with a smaller proportion occurring at an educational establishment (5%) or at work (3%). Almost six in ten (58%) falls occurred in the home.

Table 3 shows the ethnicity of attendees to North Manchester General Hospital ED. Over three-quarters (78%) were white, 6% were Pakistani and 4% were black.

The disposal of a patient can give an indication of the severity of the injuries sustained. Over six in ten (61%) attendees were discharged, almost three in ten (28%) were referred and 9% were admitted (**Table 4**). Almost eight in ten (77%) RTC attendees were discharged (**Table 5**).

Table 6 shows the arrival method of attendances at North Manchester General Hospital ED. Seven in ten (70%) arrived by private transport while nearly a fifth (18%) arrived by ambulance.

Table 7 presents data for assault attendances to North Manchester ED. Over seven in ten (72%) of assault attendees were male and nearly a half (48%) were aged 20 to 34 years. Over two-fifths (42%) of assaults occurred in a public place.

Figure 1: North Manchester General Hospital ED: Total injury attendances by gender and month, April 2011 to March 2012

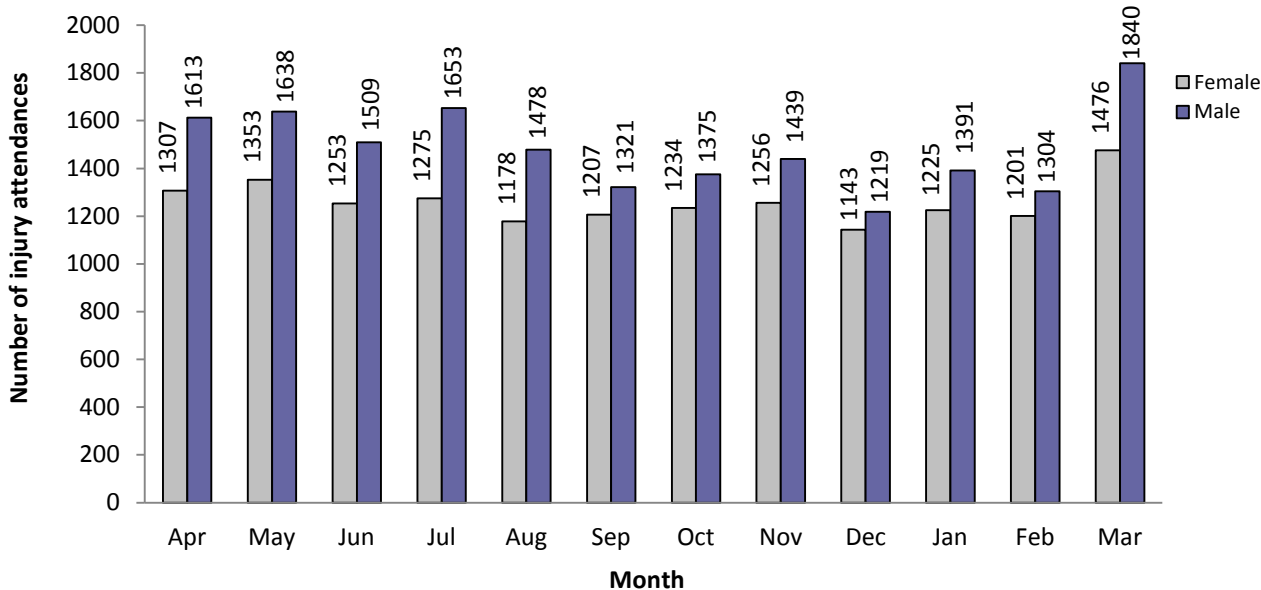
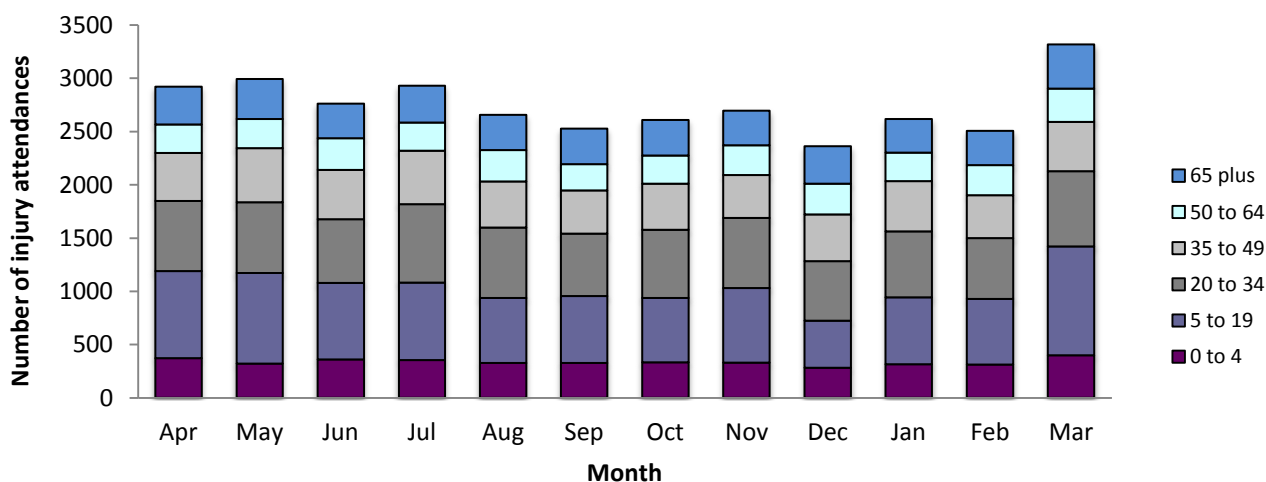


Table 1: North Manchester General Hospital ED: Total injury attendances by injury group and month, April 2011 to March 2012^{1*}

Injury group	Apr	May	Jun	Jul	Aug	Sep	Oct	Nov	Dec	Jan	Feb	Mar	Total	%
Other injury	1733	1927	1776	1755	1624	1542	1532	1647	1301	1630	1493	2221	20181	61
Fall	716	557	548	622	531	538	589	564	603	506	595	624	6993	21
RTC	163	206	158	229	221	192	204	191	205	208	177	181	2335	7
Assault	150	138	97	129	91	117	131	165	125	151	128	155	1577	5
Burns and scalds	59	62	81	70	65	53	66	56	68	59	56	44	739	2
Bites and stings	64	57	77	97	89	63	65	49	34	39	36	60	730	2
DSH	35	44	25	26	35	23	22	23	26	23	20	31	333	1
Total	2920	2991	2762	2928	2656	2528	2609	2695	2362	2616	2505	3316	32888	100

*Percentages may not equal 100 due to rounding.

Figure 2: North Manchester General Hospital ED: Total injury attendances by age group and month, April 2011 to March 2012



¹ Due to low numbers firework injury (n=5), sports injury (n<5) and electrical accident (n=31) have been included in other injury.

Figure 3: North Manchester General Hospital ED: Total injury attendances by age group and injury group (excluding other injury), April 2011 to March 2012

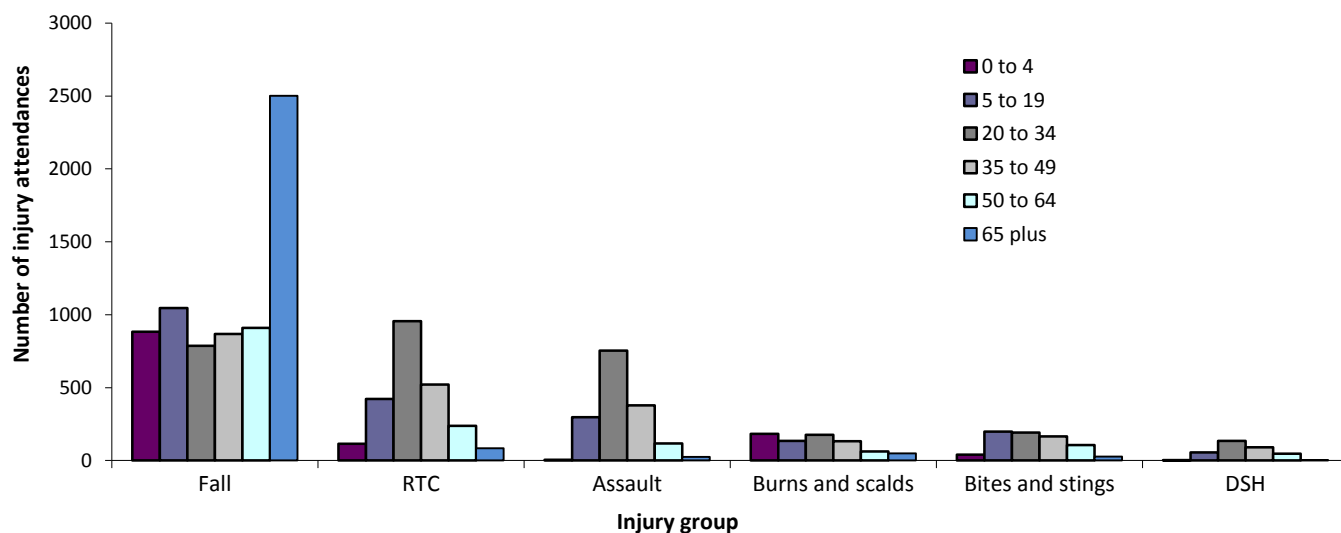


Table 2: North Manchester General Hospital ED: Total injury attendances by location of incident and injury group, April 2011 to March 2012^{2*}

Location	Assault		Bites and stings		Burns and scalds		DSH		Fall		Other injury		RTC		Total	
	n	%	n	%	n	%	n	%	n	%	n	%	n	%	n	%
Home	413	26	345	47	429	58	229	69	4084	58	11287	56	239	10	17026	52
Other	390	25	127	17	63	9	59	18	687	10	3444	17	1927	83	6697	20
Public place	656	42	165	23	31	4	27	8	1386	20	2384	12	98	4	4747	14
Not recorded	45	3	60	8	153	21	15	5	443	6	912	5	66	3	1694	5
Educational establishment	26	2	7	1	7	1	***	1	242	3	1313	7	***	0	1599	5
Work	47	3	26	4	56	8	***	0	151	2	841	4	***	0	1125	3
Total	1577	100	730	100	739	100	333	100	6993	100	20181	100	2335	100	32888	100

*Percentages may not equal 100 due to rounding.

Table 3: North Manchester General Hospital ED: Total injury attendances by ethnicity and month, April 2011 to March 2012³

Ethnicity	Apr	May	Jun	Jul	Aug	Sep	Oct	Nov	Dec	Jan	Feb	Mar	Total	%
White	2260	2323	2155	2236	2103	1950	2026	2124	1822	2040	1915	2579	25533	78
Pakistani	181	183	183	217	175	185	161	157	150	157	124	191	2064	6
Not recorded	123	115	98	123	99	103	112	103	109	115	126	148	1374	4
Black	139	138	108	109	98	90	96	118	96	103	125	132	1352	4
Any other ethnic group	98	105	101	114	75	89	95	94	96	103	117	136	1223	4
Mixed	41	60	37	49	42	47	55	35	38	37	46	63	550	2
Any other Asian background	44	36	50	39	28	28	38	35	25	30	20	40	413	1
Indian	23	17	24	22	15	19	12	21	15	23	16	16	223	1
Chinese	***	***	***	14	13	***	7	***	***	***	***	6	118	0
Bangladeshi	***	***	***	5	8	***	7	***	***	***	***	5	38	0
Total	2920	2991	2762	2928	2656	2528	2609	2695	2362	2616	2505	3316	32888	100

² Please note that all numbers less than five have been suppressed in line with patient confidentiality and if there is only one number <5 in a category then two numbers will be suppressed at the next level.

³ White = Irish, British, other white background; Mixed = white and black, white and Asian, mixed any other; Black = African, Caribbean, other black.

Table 4: North Manchester General Hospital ED: Total injury attendances by method of disposal and month, April 2011 to March 2012⁴

Disposal	Apr	May	Jun	Jul	Aug	Sep	Oct	Nov	Dec	Jan	Feb	Mar	Total	%
Discharged	1682	1726	1674	1741	1662	1626	1669	1687	1528	1581	1503	1943	20022	61
Referral/follow-up	877	931	770	820	695	619	647	753	561	750	720	1037	9180	28
Admitted	271	277	271	306	256	230	249	228	233	247	240	287	3095	9
Other	90	57	47	61	43	53	44	27	40	38	42	49	591	2
Total	2920	2991	2762	2928	2656	2528	2609	2695	2362	2616	2505	3316	32888	100

Table 5: North Manchester General Hospital ED: Total injury attendances by method of disposal and injury group, April 2011 to March 2012*

Disposal	Assault		Bites and stings		Burns and scalds		DSH		Fall		Other injury		RTC		Total	
	n	%	n	%	n	%	n	%	n	%	n	%	n	%	n	%
Discharged	822	52	462	63	291	39	144	43	3680	53	12815	64	1808	77	20022	61
Referral/follow-up	305	19	242	33	359	49	46	14	1663	24	6201	31	364	16	9180	28
Admitted	262	17	***	3	***	9	78	23	1462	21	1087	5	121	5	3095	9
Other	188	12	***	1	***	4	65	20	188	3	78	0	42	2	591	2
Total	1577	100	730	100	739	100	333	100	6993	100	20181	100	2335	100	32888	100

*Percentages may not equal 100 due to rounding.

Table 6: North Manchester General Hospital ED: Total injury attendances by mode of arrival and month, April 2011 to March 2012

Arrival mode	Apr	May	Jun	Jul	Aug	Sep	Oct	Nov	Dec	Jan	Feb	Mar	Total	%
Private transport	2084	2150	1917	2051	1889	1780	1774	1919	1561	1837	1793	2328	23083	70
Ambulance	559	519	468	547	438	466	511	458	519	466	477	538	5966	18
Other	66	86	105	84	105	82	84	71	83	72	74	126	1038	3
Not recorded	62	81	89	75	80	68	83	82	70	95	76	63	924	3
Taxi	59	72	74	76	52	52	68	79	57	79	28	63	759	2
Foot	51	30	43	48	44	29	36	35	24	29	23	127	519	2
Public transport	29	35	45	30	32	42	35	37	27	20	19	41	392	1
Police	***	***	***	***	***	***	***	***	***	***	***	***	178	1
Work transport	***	***	***	***	***	***	***	***	***	***	***	***	29	0
Total	2920	2991	2762	2928	2656	2528	2609	2695	2362	2616	2505	3316	32888	100

⁴ Admitted=admitted to hospital/became a lodged patient of the same health care provider; Discharged=discharged - did not require any follow-up treatment; Referral/follow-up =discharged - follow-up treatment to be provided by GP, referred to ED clinic, referred to fracture clinic, referred to other out-patient clinic, referred to other health care professional; Other=died in department, left department before being treated, left department having refused treatment, other.

Table 7: North Manchester General Hospital ED: Total injury attendances and assault attendances by gender, incident location, and age group, April 2011 to March 2012*

	Assaults (n=1,577)	All injuries (n=32,888)
Gender	%	%
Female	28	46
Male	72	54
Location		
Public place	42	14
Home	26	52
Other	25	20
Work	3	3
Educational establishment	2	5
Not recorded	3	5
Age group		
0 - 4	0	12
5 - 19	19	25
20 - 34	48	23
35 - 49	24	16
50 - 64	7	10
65 plus	2	13

*Percentages may not equal 100 due to rounding

Author: Ian Warren, Published: May 2012

For further information please contact: Centre for Public Health, Research Directorate, Liverpool John Moores University, 2nd Floor, Henry Cotton Building, 15-21 Webster Street, Liverpool, L3 2ET, Tel: 0151 231 4513 or Email: i.j.warren@ljmu.ac.uk

Website: www.tiig.info (data requests should be made through the website)